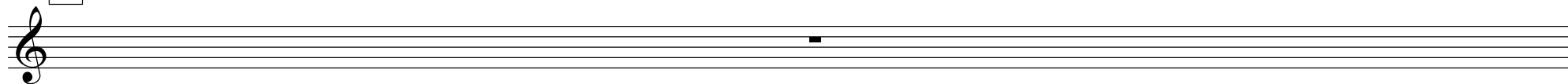


Loch Leven Castle

wh3

♩ = 62

A



2 2 (1 2 3 2) (1 2 3 5 3) 1 2 3 2 1 C 1 C 6' 5' 3' 4' 2' (3' 2' 3') 5' 6' C (0 1 2 1) (3 2 3 4 3) C 1

A musical staff with a treble clef and a key signature of one sharp. It contains measures 2 through 5 of section A. Measure 2 is a repeat sign. Fingerings and other annotations are placed above the notes.

6 2 (1 2 3 2) (1 2 3 5 3) 1 2 3 2 1 C 1 C 6' 5' 3' 4' 2' (3' 2' 3') 5' 6' 1 1. (c c C) (2 1 2 3 2) C 1 2. (c c C) (2 1 2 3 2) 5' 4' 3'

A musical staff with a treble clef and a key signature of one sharp. It contains measures 6 through 10 of section A. Measures 6-9 are a first ending, and measure 10 is a second ending. A repeat sign is at the end of the second ending.

B

11 2 (1' 2' 3' 2') (1' 2' 3' 5' 3') 2' 3' 2' 1' 3' (2' 1' 2') 3' 4' 5' 3' 4' 2' (3' 2' 3') 5' 6' 1 (0 1 2 1) (3 2 3 4 3) C 1

A musical staff with a treble clef and a key signature of one sharp. It contains measures 11 through 14 of section B. Measure 11 is a repeat sign. Fingerings and other annotations are placed above the notes.

15 2 (1 2 3 2) (1 2 3 5 3) 1 2 3 2 1 C 1 C 6' 5' 3' 4' 2' (3' 2' 3') 5' 6' 1 1. (c c C) (2 1 2 3 2) 5' 4' 3' 2. (c c C) (2 1 2 3 2) C 1

A musical staff with a treble clef and a key signature of one sharp. It contains measures 15 through 18 of section B. Measures 15-17 are a first ending, and measure 18 is a second ending. A repeat sign is at the end of the second ending.